

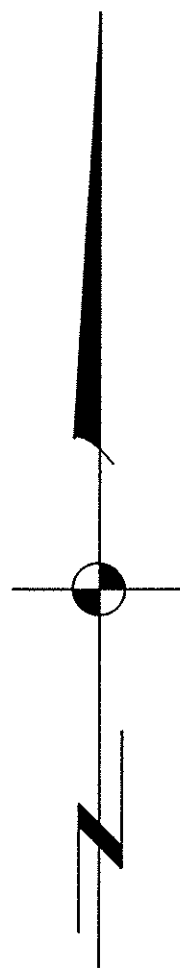
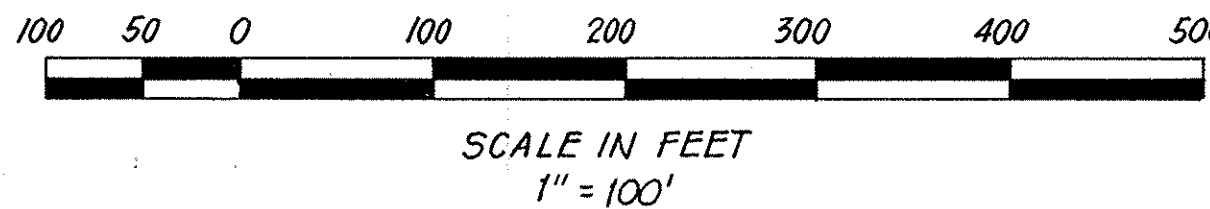
PREPARED BY:
KEITH AND SCHNARS, P.A.
ENGINEERS - PLANNERS - SURVEYORS
1115 N.E. 4TH AVENUE
FORT LAUDERDALE, FLORIDA

PZ22-12000027

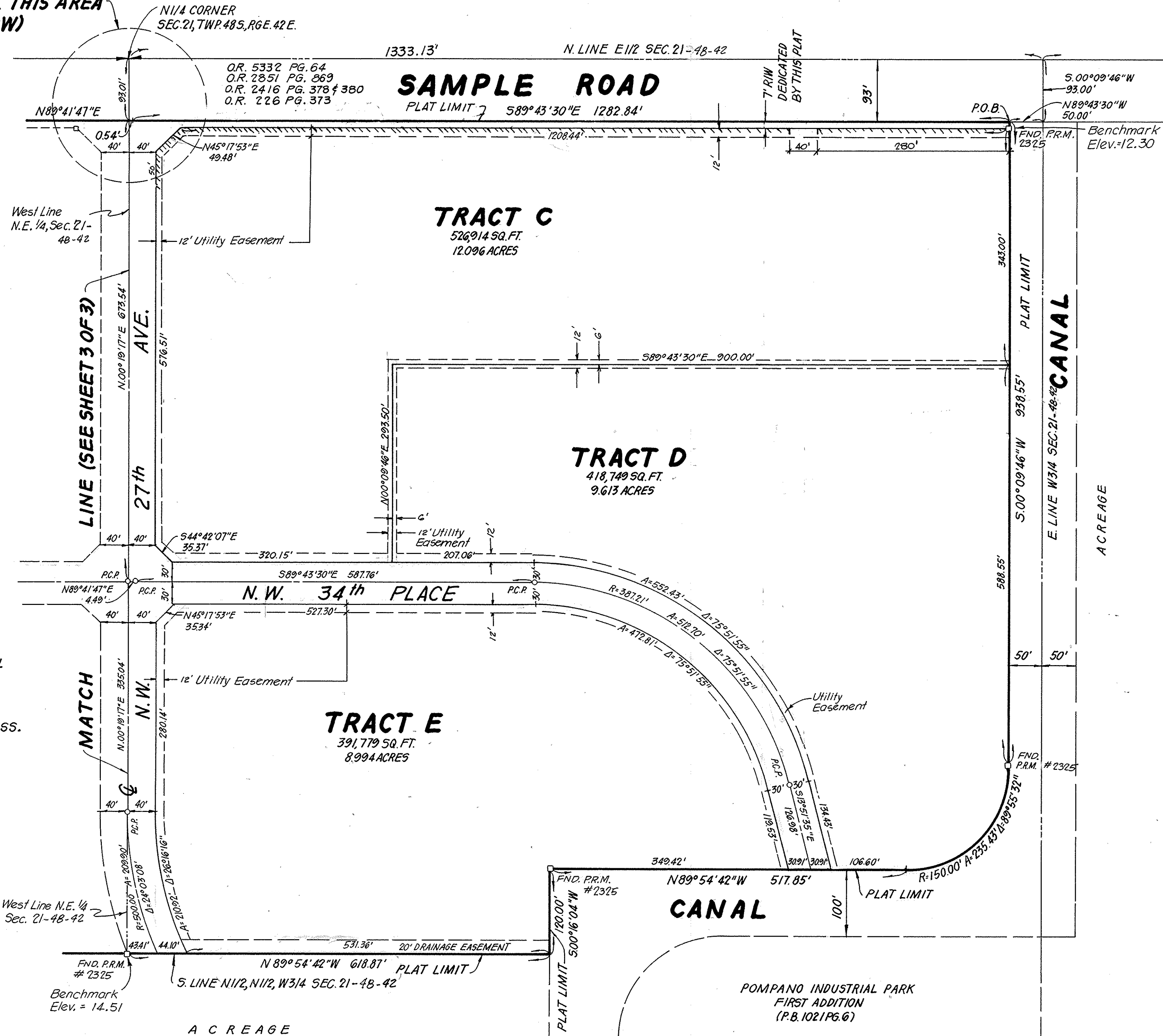
12/03/2025

POMPANO INDUSTRIAL PARK THIRD ADDITION

A PARCEL OF LAND IN SECTION 21, TOWNSHIP 48 SOUTH, RANGE 42 EAST
BROWARD COUNTY, FLORIDA



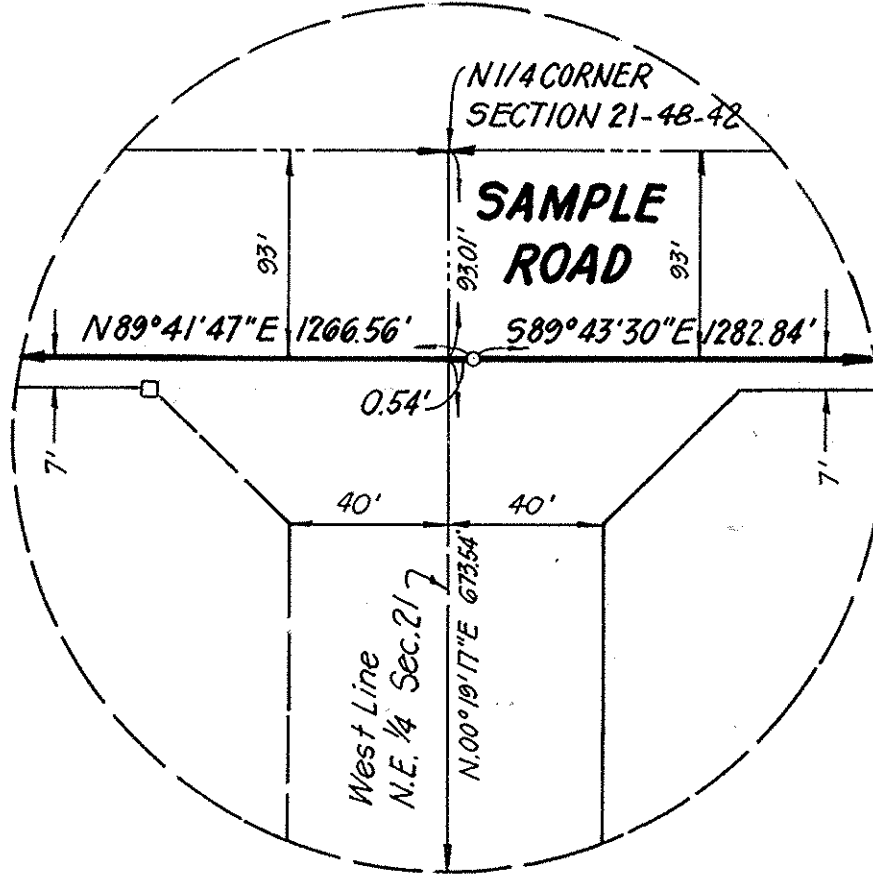
SEE DETAIL THIS AREA
(BELOW)



SURVEY NOTES:

1. \square P.R.M. INDICATES PERMANENT REFERENCE MONUMENT.
2. \circ P.C.P. INDICATES PERMANENT CONTROL POINT.
3. SURVEY DATA IN FIELD BOOK 2064 PAGE 32-34
4. ELEVATIONS SHOWN HEREON ARE BASED ON THE NATIONAL GEODETIC VERTICAL DATUM OF 1929.
5. BEARINGS SHOWN HEREON ARE BASED ON POMPANO INDUSTRIAL PARK FIRST ADDITION (P.B. 102, PG. 6).
6. \cdots INDICATES LINE OF NON-VEHICULAR ACCESS.
7. AREA TABULATION:

Tracts A thru G	3,261,541 sq. ft.	74.8747 Ac.
Internal R/W	307,153 sq. ft.	7.0512 Ac.
T/R/W Sample Rd.	18,177 sq. ft.	0.4173 Ac.
TOTAL	3,586,871 sq. ft.	82.3432 Ac.



DETAIL
(NOT TO SCALE)